

ZAXIS-7H series

HITACHI

Reliable Solutions

Hitachi Construction Machinery Group

LANDCROS

Japanese Excellence—Reliable Solutions



HYDRAULIC EXCAVATOR

Model code : ZX130-7H

Engine gross power : 78.5 kW

Operating weight : 14 000 kg

Bucket capacity : 0.45 – 0.59 m³

SPECIFICATIONS

ENGINE	
Model	Isuzu AR-4JJ1X
Type	4-cycle water-cooled, common rail direct injection
Aspiration	Variable geometry turbocharged, intercooled, cooled EGR
Aftertreatment	DOC + SCR system
No. of cylinders	4
Rated power	
ISO 14396 : 2002 gross	78.5 kW at 2 000 min ⁻¹
ISO 9249 : 2007 net	74.9 kW at 2 000 min ⁻¹
Maximum torque	375 Nm at 1 800 min ⁻¹
Piston displacement	2.999 L
Bore and stroke	95.4 mm x 104.9 mm
Batteries	2 x 12 V / 58 Ah

HYDRAULIC SYSTEM	
Hydraulic Pumps	
Main pumps	2 variable displacement axial piston pumps
Maximum oil flow	2 x 105 L/min
Pilot pump	1 gear pump
Maximum oil flow	30 L/min
Hydraulic Motors	
Travel	2 variable displacement axial piston motors
Swing	1 axial piston motor
Relief Valve Settings	
Implement circuit	34.3 MPa
Swing circuit	32.3 MPa
Travel circuit	34.3 MPa
Pilot circuit	3.9 MPa
Power boost	36.3 MPa
Hydraulic Cylinders	
	Quantity
Boom	2
Arm	1
Bucket	1

UPPERSTRUCTURE	
Revolving Frame	
D-section frame for resistance to deformation.	
Swing Device	
Axial piston motor with planetary reduction gear is bathed in oil. Swing circle is single-row. Swing parking brake is spring-set/hydraulic-released disc type.	
Swing speed	13.3 min ⁻¹
Swing torque	34.0 kNm

UNDERCARRIAGE	
Tracks	
Heat-treated connecting pins with dirt seals. Hydraulic (grease) track adjusters with shock-absorbing recoil springs.	
Numbers of Rollers and Shoes on Each Side	
Upper rollers	1
Lower rollers	7
Track shoes	44
Track guards	1
Travel Device	
Each track driven by 2-speed axial piston motor. Parking brake is spring-set/hydraulic-released disc type. Automatic transmission system: High-Low.	
Travel speeds	High : 0 to 5.5 km/h
	Low : 0 to 3.3 km/h
Maximum traction force	117 kN
Gradeability	70% (35 degree) continuous

SERVICE REFILL CAPACITIES	
Fuel tank	285.0 L
Engine coolant	21.0 L
Engine oil	17.0 L
Swing device	3.2 L
Travel device (each side)	4.2 L
Hydraulic system	185.0 L
Hydraulic oil tank	69.0 L
DEF/AdBlue® tank	35.0 L

ENVIRONMENT	
Engine Emissions	EPA Final Tier 4 / EU Stage IV
Sounds Level	
Sound level in cab according to ISO 6396 : 2008	LpA 69 dB(A)
External sound level according to ISO 6395 : 2008 and EU Directive 2000/14/EC	LwA 98 dB(A)

WEIGHTS AND GROUND PRESSURE

Operating Weight and Ground Pressure

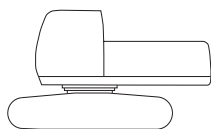
			ZX130-7H *	
Boom type			Monoblock	
Shoe type	Shoe width (mm)	Arm length (m)	kg	kPa
Triple grouser	600	3.01	14 000	37

* Including 0.52 m³ (ISO 7451:2007 heaped) bucket weight (410 kg) and counterweight (2 950 kg).

BASIC MACHINE WEIGHT AND COMPONENTS WEIGHT

Basic Machine Weight and Overall Width

Excluding front end attachment, fuel, hydraulic oil and coolant etc. Including counterweight.



		ZX130-7H	
Shoe Type	Shoe width (mm)	Weight (kg)	Overall width (mm)
Triple grouser	600	11 000	2 590

Components Weight

Unit: kg

		ZX130-7H
Counterweight		2 950
Monoblock boom (with arm cylinder and boom cylinder)		1 280
Arm 3.01 m (with bucket cylinder)		730
Bucket ISO 7451 : 2007 0.52 m ³		410

BUCKET AND ARM DIGGING FORCE

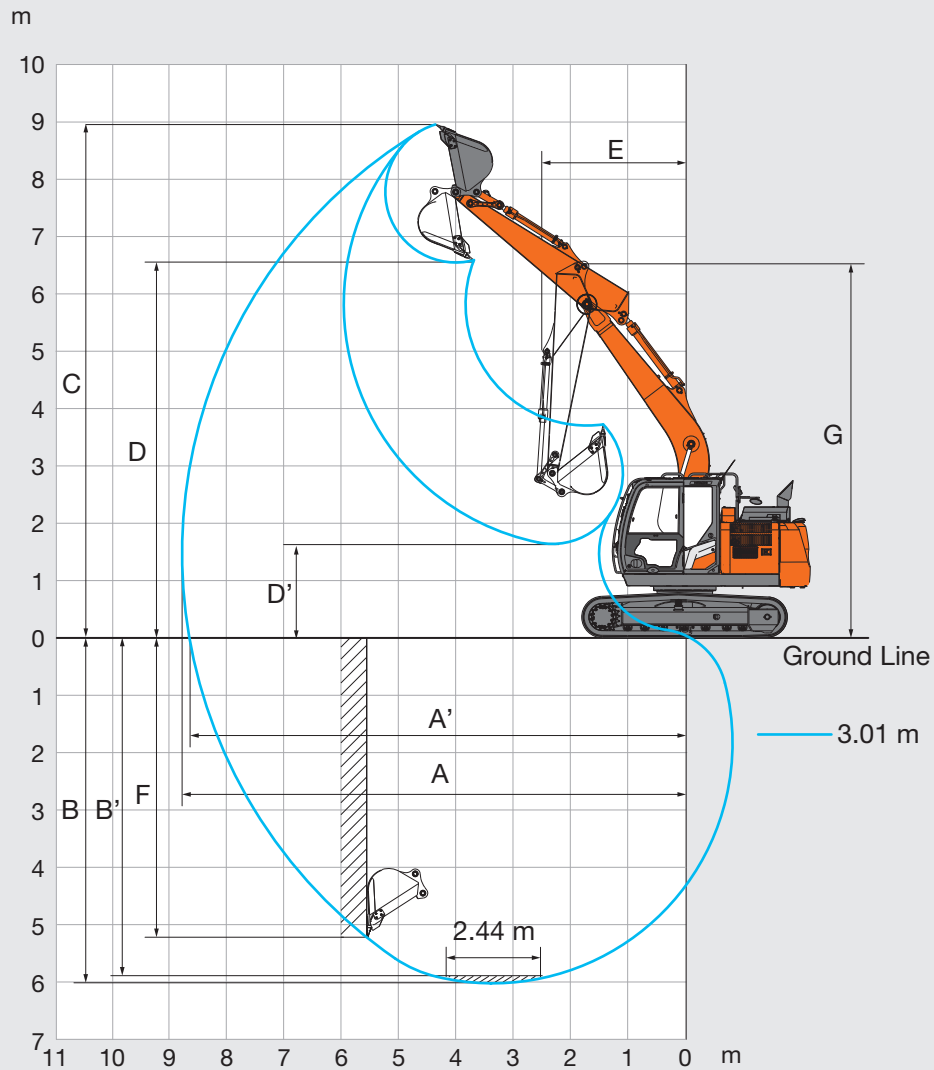
Unit: kN

		ZX130-7H
Arm length		3.01 m
Bucket digging force* ISO 6015 : 2006		104
Arm crowd force* ISO 6015 : 2006		61

* At power boost

SPECIFICATIONS

WORKING RANGES

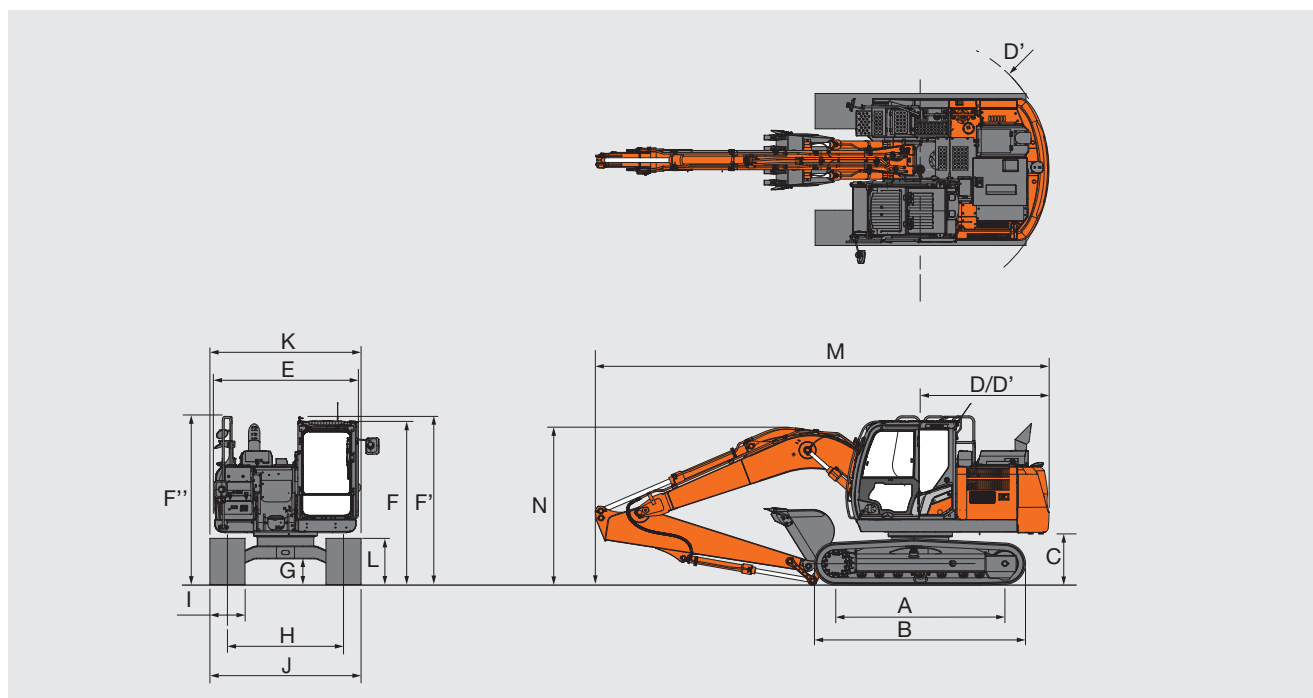


Unit: mm

	ZX130-7H
	Monoblock boom
Arm length	3 010
A Max. digging reach	8 770
A' Max. digging reach (on ground)	8 650
B Max. digging depth	6 030
B' Max. digging depth for 2.44 m level	5 840
C Max. cutting height	8 930
D Max. dumping height	6 520
D' Min. dumping height	1 610
E Min. swing radius	2 620
F Max. vertical wall digging depth	5 220
G Front height at Min. swing radius	6 550

Excluding track shoe lug

DIMENSIONS



Unit: mm

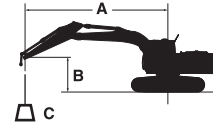
		ZX130-7H
		Monoblock boom
A	Distance between tumblers	2 880
B	Undercarriage length	3 580
*1C	Counterweight clearance	840
D	Rear-end swing radius	2 190
D'	Rear-end length	2 190
E	Overall width of upperstructure	2 460
F	Overall height of cab	2 790
F'	Overall height of handrail	2 870
F''	Overall height of handrail (on cab)	2 870
*1G	Min. ground clearance	410
H	Track gauge	1 990
I	Track shoe width	G 600
J	Undercarriage width	2 590
K	Overall width	2 590
*1L	Track height with triple grouser shoes	790
M	Overall length	
	With Arm 3.01 m	7 710
N	Overall height of boom	
	With Arm 3.01 m	2 680 ^{*2}

*1 Excluding track shoe lug G: Triple grouser shoe

*2 Transport pin position

MACHINE CAPACITIES

- Notes:
1. Ratings are based on ISO 10567 : 2007.
 2. Machine capacity does not exceed 75% of tipping load with the machine on firm, level ground or 87% full hydraulic capacity.
 3. The load point is the center-line of the bucket pivot mounting pin on the arm.
 4. *Indicates load limited by hydraulic capacity.
 5. 0 m = Ground.



A: Load radius
 B: Load point height
 C: Machine capacity

For machine capacities, subtract installed attachment and quick hitch weight from machine capacities.

To determine lifting capacities, apply "Rating over-side or 360 degrees" machine capacities from the table and deduct weight of installed attachment and quick hitch. Optional feature may affect machine performance.

ZX130-7H MONOBLOCK BOOM

Rating over-front Rating over-side or 360 degrees Unit : kg

Conditions	Load point height (m)	Load radius										At max. reach		
		1.5 m		3.0 m		4.5 m		6.0 m		7.5 m				meter
Boom 4.60 m Arm 3.01 m Counter Weight 2 950 kg Grouser shoe 600 mm	6.0											*2 110	*2 110	5.97
	4.5					*3 080	*3 080	*3 120	2 670			*1 970	*1 970	6.88
	3.0			*4 890	*4 890	*3 890	*3 890	*3 440	2 590			*1 960	1 850	7.38
	1.5			*7 680	6 880	*4 940	3 760	3 570	2 480	*2 230	1 760	*2 060	1 750	7.54
	0 (Ground)			*7 090	6 410	5 300	3 550	3 460	2 370			*2 270	1 770	7.39
	-1.5	*4 090	*4 090	*8 880	6 290	5 190	3 440	3 400	2 320			*2 690	1 920	6.92
	-3.0	*7 150	*7 150	*8 350	6 340	5 190	3 450	3 430	2 350			3 400	2 330	6.04
	-4.5			*6 040	*6 040	*3 710	3 600					*3 700	3 600	4.50

EQUIPMENT

● : Standard equipment ○ : Optional equipment

ENGINE	ZX-7H 130
Aftertreatment device	●
Air cleaner double filters	●
Alternator 50 A	●
Auto idle system	●
Auto shut-down control	●
Cartridge-type engine oil filter	●
Cartridge-type fuel main filter	●
ConSite OIL (sensor)*	○
DEF / AdBlue® tank	●
DEF / AdBlue® tank inlet strainer and extension	●
Dry-type air filter with evacuator valve (with air filter restriction indicator)	●
Dust-proof indoor net	●
ECO / PWR / HP mode control	●
Electrical fuel feed pump	●
Engine oil drain coupler	●
Expansion tank	●
Fan guard	●
Fuel cooler	●
Fuel pre-filter with water separator	●
Isolation-mounted engine	●
Maintenance free pre-cleaner	●
Oil separator	●
Radiator, oil cooler and intercooler	●

HYDRAULIC SYSTEM	ZX-7H 130
Auto power lift	●
ConSite OIL (sensor)*	○
Control valve with main relief valve	●
Equipment package for lifting objects	○
Extra port for control valve	●
High mesh full flow filter	●
Hose rupture valve for arm	○
Hose rupture valve for boom	○
Pilot filter	●
Power boost	●
Restriction indicator for full flow filter	○
Suction filter	●
Variable reliefvalve for breaker and crusher	●
Work mode selector	●

CAB	ZX-7H 130
Auto control air conditioner	●
AUX function lever (breaker assist)	○
AUX function lever (breaker)	●
Bluetooth® integrated radio	●
Cab : All-weather sound suppressed steel	●
Cab : CRES VII (center pillar reinforced structure)	●
Cab : OPG top guard Level I (ISO 10262 : 1998) compliant	●
Cab : ROPS (ISO 12117-2 : 2008) compliant	●
Console height adjustment	●
Control lever auto-lock	●
Drink holder with hot and cool function	●
Electric double horn	●
Engine shut-off switch	●
Equipped with reinforced, tinted (green color) glass windows	●
Evacuation hammer	●
Floor mat	●
Footrest	●
Front guard : OPG Level II (ISO 10262 : 1998) compliant	○
Front window washer (1 point)**	●
Front window washer (2 points)**	○
Glove compartment	●
Hands-free calling device	●
Hot and cool box	●
Intermittent windshield wipers	●
Key cylinder light	●
LED room light	●
Magazine rack	●
Pilot shut-off lever	●
Power outlet 12 V and 24 V	●
Push button low idle	●
Rain guard (without OPG front guard)	●
Rear tray	●
Retractable seat belt 76 mm	●
Rubber radio antenna	●
Seat : air suspension seat with heater	●
Seat adjustment part : backrest, armrest, height and angle, slide forward / back	●
Seat belt reminder	●
Short wrist control levers	●
Smartphone holder	●
Straight travel pedal	○
Sunscreen roller type (multi-use front or side and rear window)	●
Top guard: OPG Level II (ISO 10262 : 1998) compliant	○
Transparent roof with slide curtain	●
USB power supply	●
Wide view wiper	○
Windows on front, upper, lower and left side can be opened	●
2 speakers	●
4 fluid-filled elastic mounts	●
8 inch monitor	●

MONITOR SYSTEM	ZX-7H 130
Alarm buzzers: overheat, engine oil pressure, overload, SCR system trouble, etc	●
Alarms: overheat, engine warning, engine oil pressure, alternator, minimum fuel level, hydraulic filter restriction, air filter restriction, work mode, overload, SCR system trouble, etc	●
Display of meters: water temperature, hour, fuel rate, clock, DEF / AdBlue® rate, etc	●
Other displays: work mode, auto-idle, glow, rearview monitor, operating conditions, etc	●
35 languages selection	●

LIGHTS	ZX-7H 130
Additional boom LED light with cover	●
Additional cab roof front LED lights	●
Additional cab roof rear LED lights	●
LED lights for camera (side and rear view camera)	○
Rotating lamp	○
2 working LED lights	●

UPPER STRUCTURE	ZX-7H 130
AERIAL ANGLE (270-degree view camera system)	●
Batteries 2 x 58 Ah	●
Body top handrail	●
Cab top handhold	●
Control pattern changer (ISO/BH)	●
Counterweight 2 950 kg	●
Electric fuel refilling pump with auto stop and filter	●
Fuel level float	●
HD undercover	○
Hydraulic oil level gauge	●
Lockable fuel refilling cap	●
Lockable machine covers	●
Lockable tool box	●
Platform handrail	●
Side view mirror (right and left)	●
Skid-resistant plates	●
Swing parking brake	●
Undercover	●
2 way battery disconnect switch	●

UNDERCARRIAGE	ZX-7H 130
Bolt-on sprocket	●
Greasing type track adjuster	●
Reinforced track links with pin seals	●
Shoe: 600 mm triple grouser	●
Towing hole for light weight object	●
Track undercover	○
Travel direction mark on track frame	●
Travel motor covers	●
Travel parking brake	●
Upper and lower rollers	●
1 track guard (each side)	●
4 tie down brackets	●

ATTACHMENTS	ZX-7H 130
Accessories for 2 speed selector	○
Additional pump (30 L/min)	○
Assist piping	○
Breaker and crusher piping (Short piping)	○
Breaker and crusher piping	●
Pilot accumulator	○

● : Standard equipment ○ : Optional equipment

MISCELLANEOUS	ZX-7H 130
ConSite	○
Global e-service	●
Onboard information controller	●
Satellite communication device	○
Standard tool kit	●
Travel alarm	●

FRONT ATTACHMENTS	ZX-7H 130
Arm 3.01 m	●
Arm tip remote lubrication	●
Casted bucket link A	●
Centralized lubrication system	●
Dirt seal on all bucket pins	●
Flanged pin	●
HN bushing	●
Lower arm reinforcement	●
Reinforced resin thrust plate	●
WC (tungsten-carbide) thermal spraying	●

Standard and optional equipment may vary by country, so please consult authorized dealer for details.

* Engine oil and hydraulic oil monitoring sensor.

** Front window washer (1 point) is only when equipped with standard wiper.

Front window washer (2 points) is only when equipped with wide view wiper.